

COUNTRY CHARM CHECKERED DISH CLOTH

By Christine Cavagnaro



FINISHED MEASUREMENTS

Sample: 15.5" x 6

LOOM

Sample: 10" Knitting Board with Metal Pins

GAUGE

Not important

YARN

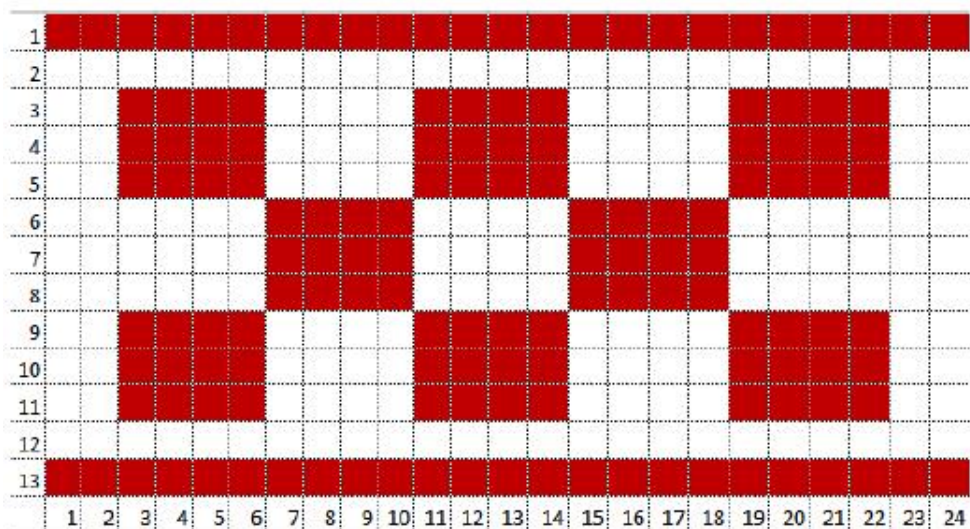
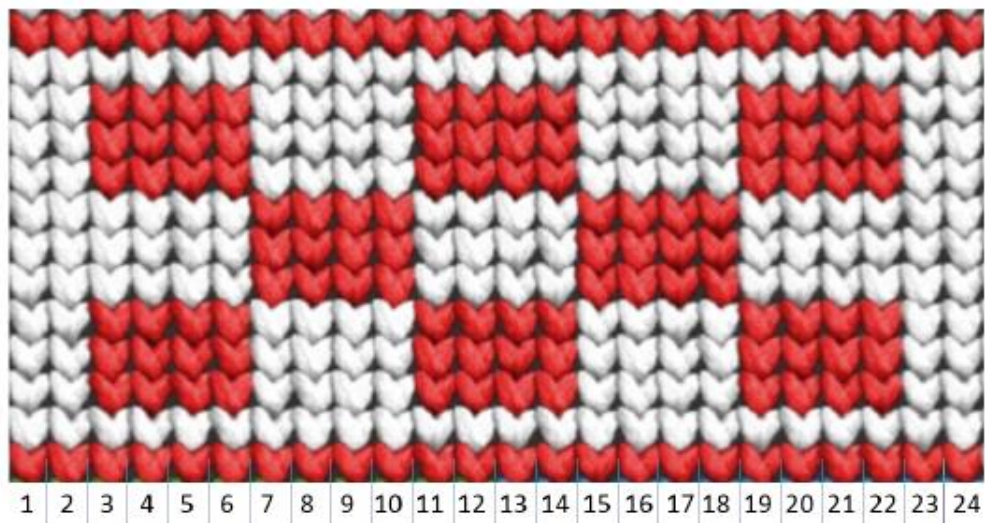
Lily Sugar 'N Cream

(Sample: Red, White)

NOTIONS

Loom hook, crochet hook

Pattern is worked using [Box stitch](#), switching to [Stockinette stitch](#) when working the checkerboard pattern.



Cast on 24 stitches of white using the [Stockinette stitch](#) cast-on method. Continue working in [Box stitch](#) for 8 rows.

Add red yarn and continue knitting in [Stockinette stitch](#) following the pattern.

Once pattern is complete, tie off red yarn and continue in [Box stitch](#) in white for the next 17 rows.

Switch back to the checkerboard pattern, adding red yarn again and continue in [Stockinette](#) until checkerboard pattern is complete.

Tie off red yarn and knit white in [Box stitch](#) for 8 rows. Bind off.